

SharkBite®

Small Diameter (½ in.–2 in.) Fittings

SharkBite Copper Press fittings (½ in.–2 in.) deliver secure, flame-free connections for copper tubing systems. Made from high-quality copper (C12200) and pre-fitted with EPDM seals, these fittings are designed for use with ASTM B88 hard-drawn copper pipe (Types K, L, M). Small diameter fittings do not require a stainless steel sleeve, streamlining installation with standard V-UPRofile Press tools.

Applications

Designed for residential and commercial water systems, these fittings are ideal for potable water, hydronic heating, and chilled water lines. With a flame-free install, SharkBite Copper Press saves time and labor while providing a dependable, code-compliant connection in both exposed and concealed spaces.

Specifications Data

| Materials | |
|-----------------|--------------------------------|
| Body | Copper (Alloy C12200) |
| Sealing Element | EPDM (ASTM D2000, NSF/ANSI 61) |

| Performance | |
|---------------------|-------------------------------------|
| Working Pressure | 200 psi |
| Max Test UPResure | 607 psi |
| Working Temperature | 32°F to 212°F (0°C to 100°C) |
| Max Temperature | 250°F (121°C) |
| Compatible Pipe | ASTM B88 Copper Pipe (Type K, L, M) |
| Tool Compatibility | V-Profile Press Tool |

Certifications & Listings

ASME B16.51/IAPMO PS 117-2021, NSF/ANSI/CAN 61-2023 (with Errata), NSF/ANSI/CAN 372-2022

California Health & Safety Code: Section 116875

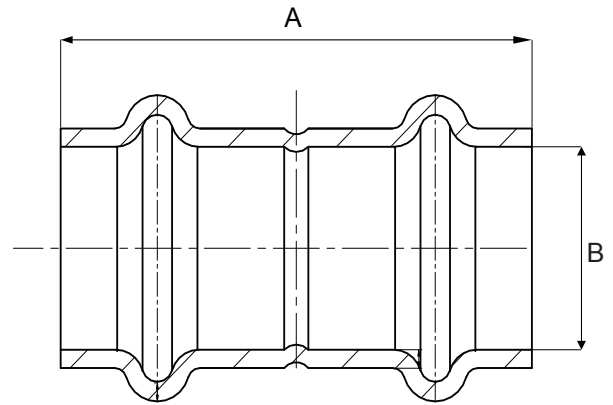
SDWA Lead Law: Section 1417(d), Lead-Free ($\leq 0.05\%$)

cUPC Listed

For listing information, please contact Customer Service

Refer to local plumbing code

US 1-877-700-4242 | sharkbite.com
Canada 1-888-820-0120 | canadasales@rwc.com



Coupling

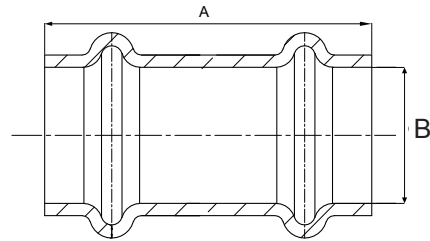
| Dimensions (inches) | | | |
|---------------------|--------|-----|-----|
| Part # | Size | A | B |
| UPR008X5 | ½ in. | 1.6 | 0.6 |
| UPR016X5 | ¾ in. | 1.9 | 0.9 |
| UPR020X5 | 1 in. | 2.0 | 1.1 |
| UPR0135X4 | 1¼ in. | 2.2 | 1.4 |
| UPR0141X2 | 1½ in. | 2.8 | 1.6 |
| UPR0154X2 | 2 in. | 3.2 | 2.1 |

| Product Submittal | |
|-------------------|--|
| Name | |
| Date | |
| Architect/Owner | |
| Contractor | |
| Tag | |
| Notes | |

Coupling No Stop

Dimensions (Inches)

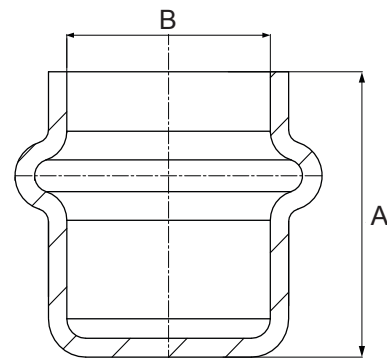
| Part # | Size | A | B |
|-----------|--------|-----|-----|
| UPR3008X5 | ½ in. | 1.6 | 0.6 |
| UPR3016X5 | ¾ in. | 1.9 | 0.9 |
| UPR3020X5 | 1 in. | 2.0 | 1.1 |
| UPR0635X4 | 1¼ in. | 2.2 | 1.4 |
| UPR0641X2 | 1½ in. | 2.8 | 1.6 |
| UPR0654X2 | 2 in. | 3.2 | 2.1 |



Cap

Dimensions (Inches)

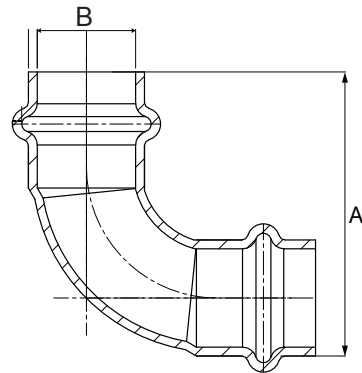
| Part # | Size | A | B |
|-----------|--------|-----|-----|
| UPR514X5 | ½ in. | 0.8 | 0.6 |
| UPR518X5 | ¾ in. | 1.0 | 0.9 |
| UPR520X5 | 1 in. | 1.0 | 1.1 |
| UPR0435X5 | 1¼ in. | 1.1 | 1.4 |
| UPR0441X5 | 1½ in. | 1.4 | 1.6 |
| UPR0454X5 | 2 in. | 1.7 | 2.1 |



90° Elbow

Dimensions (Inches)

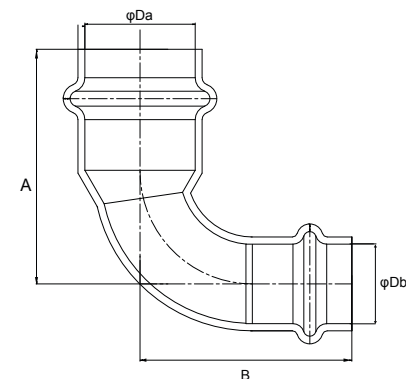
| Part # | Size | A | B |
|-----------|---------|-----|-----|
| UPR248X5 | 1/2 in. | 1.8 | 0.6 |
| UPR256X5 | 3/4 in. | 2.3 | 0.9 |
| UPR260X5 | 1 in. | 2.7 | 1.1 |
| UPR0235X2 | 1¼ in. | 3.3 | 1.4 |
| UPR0241X2 | 1½ in. | 4.1 | 1.6 |
| UPR0254X2 | 2 in. | 5.1 | 2.1 |



90° Reducing Elbow

Dimensions (Inches)

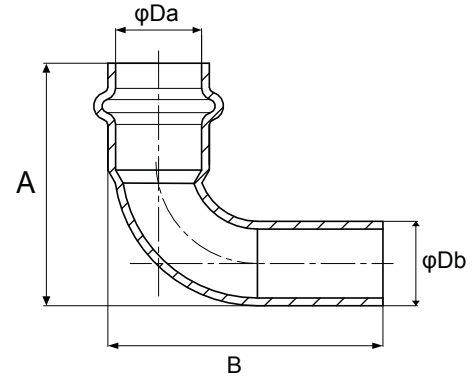
| Part # | Size | A | B | φDa | φDb |
|----------|---------------|-----|-----|-----|-----|
| UPR274X5 | ¾ in. x ½ in. | 1.9 | 1.7 | 0.9 | 0.6 |
| UPR278X5 | 1 in. x ¾ in. | 2.1 | 2.1 | 1.1 | 0.9 |



90° Street Elbow

Dimensions (Inches)

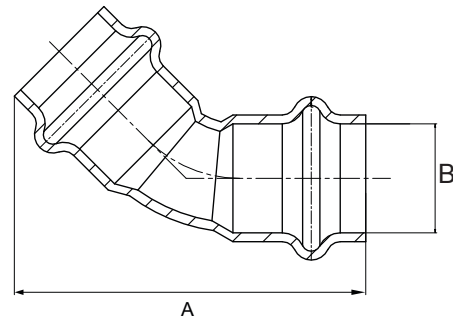
| Part # | Size | A | B | ϕDa | ϕDb |
|-----------|--------|-----|-----|-----------|-----------|
| UPR0919X5 | ½ in. | 1.8 | 2.0 | 0.6 | 0.6 |
| UPR0922X5 | ¾ in. | 2.3 | 2.6 | 0.9 | 0.9 |
| UPR0928X5 | 1 in. | 2.7 | 2.8 | 1.1 | 1.1 |
| UPR0935X2 | 1¼ in. | 3.2 | 3.3 | 1.4 | 1.4 |
| UPR0941X2 | 1½ in. | 4.1 | 3.2 | 1.6 | 1.6 |
| UPR0954X2 | 2 in. | 5.0 | 5.1 | 2.1 | 2.1 |



45° Elbow

Dimensions (Inches)

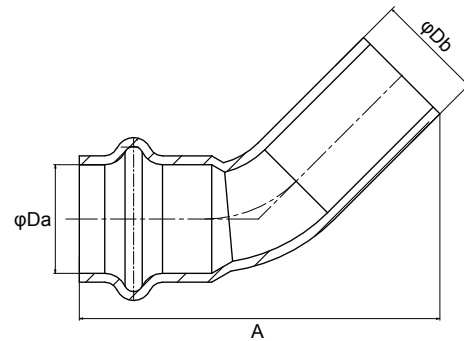
| Part # | Size | A | B |
|-----------|---------|-----|-----|
| UPR648X5 | 1/2 in. | 2.0 | 0.6 |
| UPR656X5 | 3/4 in. | 2.6 | 0.9 |
| UPR660X5 | 1 in. | 2.9 | 1.1 |
| UPR0535X4 | 1¼ in. | 3.2 | 1.4 |
| UPR0541X2 | 1½ in. | 4.2 | 1.6 |
| UPR0554X2 | 2 in. | 5.0 | 2.1 |



45° Street Elbow

Dimensions (Inches)

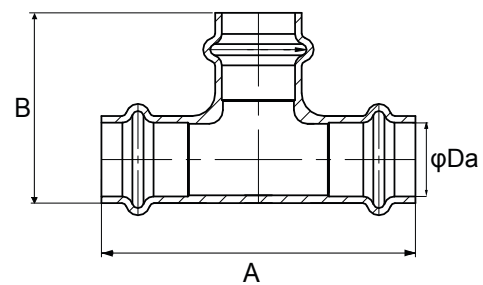
| Part # | Size | A | ϕDa | ϕDb |
|-----------|---------|-----|-----------|-----------|
| UPR615X5 | 1/2 in. | 2.1 | 0.6 | 0.6 |
| UPR620X5 | 3/4 in. | 2.7 | 0.9 | 0.9 |
| UPR07X5 | 1 in. | 2.9 | 1.1 | 1.1 |
| UPR0735X4 | 1¼ in. | 3.3 | 1.4 | 1.4 |
| UPR0741X2 | 1½ in. | 4.1 | 1.6 | 1.6 |



Tee

Dimensions (Inches)

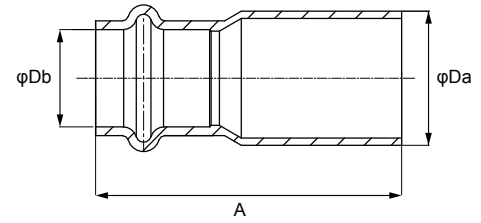
| Part # | Size | A | B | ϕDa |
|-----------|--------|-----|-----|-----------|
| UPR362X5 | ½ in. | 2.7 | 1.6 | 0.6 |
| UPR370X5 | ¾ in. | 3.3 | 2.0 | 0.9 |
| UPR374X4 | 1 in. | 3.5 | 2.3 | 1.1 |
| UPR0835X2 | 1¼ in. | 3.9 | 2.6 | 1.4 |
| UPR0841X2 | 1½ in. | 4.7 | 3.2 | 1.6 |
| UPR0854 | 2 in. | 5.7 | 4.0 | 2.1 |



Sweat Reducer

Dimensions (Inches)

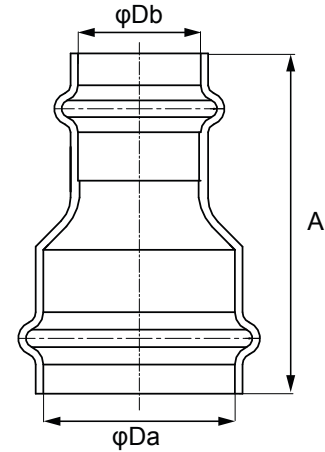
| Part # | Size | A | ϕDa | ϕDb |
|----------|----------------------------|-----|-----------|-----------|
| UPR058X5 | ¾ in. Female Sweat x ½ in. | 2.0 | 0.9 | 0.6 |
| UPR060X5 | 1 in Female Sweat x ¾ in. | 2.2 | 1.1 | 0.9 |



Reducer

Dimensions (Inches)

| Part # | Size | A | ϕDa | ϕDb |
|-------------|-----------------|-----|-----------|-----------|
| UPR012216X5 | ¾ in. x ½ in. | 2.0 | 0.9 | 0.6 |
| UPR2816X5 | 1 in. x ½ in. | 2.2 | 1.1 | 0.6 |
| UPR2822X5 | 1 in. x ¾ in. | 2.2 | 1.1 | 0.9 |
| UPR013522X4 | 1¼ in. x ¾ in. | 2.4 | 1.4 | 0.9 |
| UPR013528X4 | 1¼ in. x 1 in. | 2.3 | 1.4 | 1.1 |
| UPR014128X4 | 1½ in. x 1 in. | 2.7 | 1.6 | 1.1 |
| UPR014135X4 | 1½ in. x 1¼ in. | 2.7 | 1.6 | 1.4 |
| UPR015528X2 | 2 in. x 1 in. | 3.3 | 2.1 | 1.1 |
| UPR015135X2 | 2 in. x 1¼ in. | 3.3 | 2.1 | 1.4 |
| UPR015441 | 2 in. x 1½ in. | 3.4 | 2.1 | 1.6 |



Reducing Tee

Dimensions (Inches)

| Part # | Size | A | B | ϕDa | ϕDb | ϕDc |
|---------------|-------------------------|-----|-----|-----------|-----------|-----------|
| UPR408X5 | ½ in. x ½ in. x ¾ in. | 3.5 | 2.0 | 0.6 | 0.6 | 0.9 |
| UPR454X5 | ¾ in. x ½ in. x ½ in. | 3.1 | 1.9 | 0.9 | 0.6 | 0.6 |
| UPR444X5 | ¾ in. x ½ in. x ¾ in. | 3.4 | 2.0 | 0.9 | 0.6 | 0.9 |
| UPR412X5 | ¾ in. x ¾ in. x ½ in. | 3.1 | 1.9 | 0.9 | 0.9 | 0.6 |
| UPR416X5 | 1 in. x 1 in. x ¾ in. | 3.3 | 2.3 | 1.1 | 1.1 | 0.9 |
| UPR418X5 | 1 in. x ¾ in. x 1 in. | 3.8 | 2.3 | 1.1 | 0.9 | 1.1 |
| UPR08353516X4 | 1¼ in. x 1¼ in. x ½ in. | 3.0 | 2.4 | 1.4 | 1.4 | 0.6 |
| UPR08353522X4 | 1¼ in. x 1¼ in. x ¾ in. | 3.2 | 2.5 | 1.4 | 1.4 | 0.9 |
| UPR08353528X4 | 1¼ in. x 1¼ in. x 1 in. | 3.4 | 2.7 | 1.4 | 1.4 | 1.1 |
| UPR08414122X4 | 1½ in. x 1½ in. x ¾ in. | 3.6 | 2.8 | 1.6 | 1.6 | 0.9 |
| UPR08414128X4 | 1½ in. x 1½ in. x 1 in. | 4.1 | 2.9 | 1.6 | 1.6 | 1.1 |
| UPR08545422 | 2 in. x 2 in. x ¾ in. | 4.4 | 3.3 | 2.1 | 2.1 | 0.9 |
| UPR08545435 | 2 in. x 2 in. x 1¼ in. | 5.0 | 3.5 | 2.1 | 2.1 | 1.4 |

