

SharkBite™

Poly Tee

SharkBite™ expansion fittings are designed for use with PEX-a tubing and must be used in conjunction with SharkBite expansion rings. SharkBite expansion fittings have a 25-year system warranty when used with SharkBite PEX-a tubing.

Approved Applications

Residential and commercial potable water, recirculation, reclaimed water systems, hydronic heating/cooling (up to 50% glycol concentration) and direct burial.

Specification Data

Materials

Body	PPSU
------	------

Performance

Max Working Pressure

80 psi	at	200°F
100 psi	at	180°F
160 psi	at	73.4°F

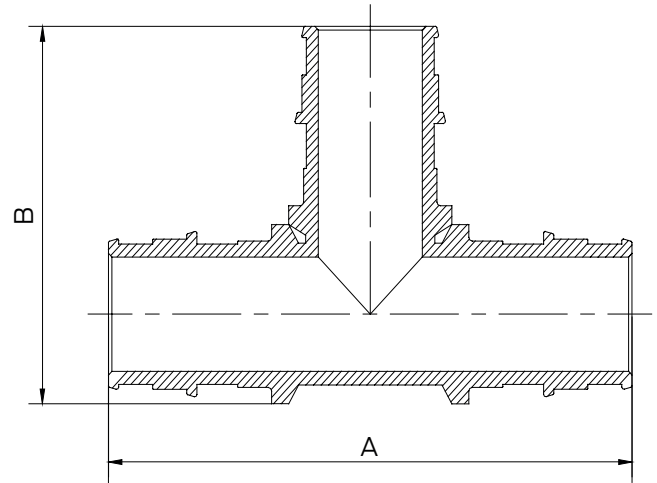
Minimum Length of Pipe Connecting Two Fittings

Fittings/Pipe Size	Min. Length	Insertion Depth
1/2 in.	2 in.	0.72 in.
3/4 in.	2-1/2 in.	0.97 in.
1 in.	3 in.	1.19 in.
1-1/4 in.	4-1/2 in.	1.46 in.
1-1/2 in.	4-1/2 in.	1.72 in.
2 in.	6 in.	2.17 in.

Certifications & Listings

ASTM F1960, ASTM F877, CSA B137.5, NSF/ANSI 14, NSF/ANSI/CAN 61, NSF/ANSI/CAN 372, ASTM E84, CAN/ULC S102.2, ASTM E119, CAN/ULC S101

For listing information, please contact Customer Service.



Dimensions (inches)

Part #	Size	A	B
UA362	1/2" x 1/2" x 1/2"	2.65	1.64
UA370	3/4" x 3/4" x 3/4"	3.56	2.22
UA374	1" x 1" x 1"	4.55	2.83
UA0835	1-1/4" x 1-1/4" x 1-1/4"	4.89	3.09
UA0841	1-1/2" x 1-1/2" x 1-1/2"	5.83	3.64
UA0854	2" x 2" x 2"	7.38	4.66

Product Submittal

Name	
Date	
Architect/Owner	
Contractor	
Tag	
Notes	