

# SharkBite™

## Poly Reducing Coupling

SharkBite™ expansion fittings are designed for use with PEX-a tubing and must be used in conjunction with SharkBite expansion rings. SharkBite expansion fittings have a 25-year system warranty when used with SharkBite PEX-a tubing.

### Approved Applications

Residential and commercial potable water, recirculation, reclaimed water systems, hydronic heating/cooling (up to 50% glycol concentration) and direct burial.

### Specification Data

#### Materials

Body	PPSU
------	------

#### Performance

##### Max Working Pressure

80 psi	at	200°F
100 psi	at	180°F
160 psi	at	73.4°F

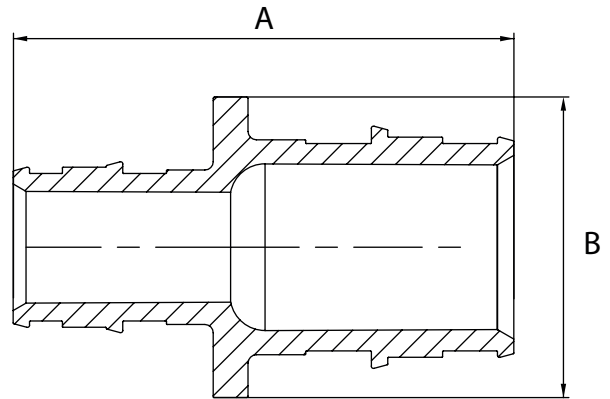
#### Minimum Length of Pipe Connecting Two Fittings

Fittings/Pipe Size	Min. Length	Insertion Depth
1/2 in.	2 in.	0.72 in.
3/4 in.	2-1/2 in.	0.97 in.
1 in.	3 in.	1.19 in.
1-1/4 in.	4-1/2 in.	1.46 in.
1-1/2 in.	4-1/2 in.	1.72 in.
2 in.	6 in.	2.17 in.

### Certifications & Listings

ASTM F1960, ASTM F877, CSA B137.5, NSF/ANSI 14, NSF/ANSI/CAN 61, NSF/ANSI/CAN 372, ASTM E84, CAN/ULC S102.2, ASTM E119, CAN/ULC S101

For listing information, please contact Customer Service.



#### Dimensions (inches)

Part #	Size	A	B
UA058	3/4" x 1/2"	1.79	1.18
UA060	1" x 3/4"	2.33	1.5
UA013522	1-1/4" x 3/4"	2.58	1.71
UA013528	1-1/4" x 1"	2.82	1.7
UA014122	1-1/2" x 3/4"	2.85	1.8
UA014128	1-1/2" x 1"	3.09	1.81
UA014135	1-1/2" x 1-1/4"	3.34	1.8
UA015441	2" x 1-1/2"	4.1	2.53

#### Product Submittal

Name	
Date	
Architect/Owner	
Contractor	
Tag	
Notes	