

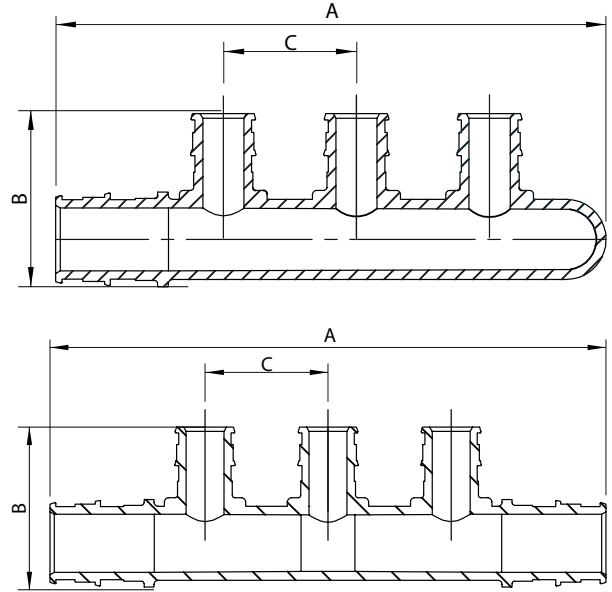
# SharkBite™

## Multi-Port Tee

SharkBite™ expansion fittings are designed for use with PEX-a tubing and must be used in conjunction with SharkBite expansion rings. SharkBite expansion fittings have a 25-year system warranty when used with SharkBite PEX-a tubing.

### Approved Applications

Residential and commercial potable water, recirculation, reclaimed water systems, hydronic heating/cooling (up to 50% glycol concentration) and direct burial.



### Specification Data

#### Materials

Body PPSU

#### Performance

##### Max Working Pressure

80 psi	at	200°F
100 psi	at	180°F
160 psi	at	73.4°F

#### Minimum Length of Pipe Connecting Two Fittings

Fittings/Pipe Size	Min. Length	Insertion Depth
1/2 in.	2 in.	0.72 in.
3/4 in.	2-1/2 in.	0.97 in.
1 in.	3 in.	1.19 in.
1-1/4 in.	4-1/2 in.	1.46 in.
1-1/2 in.	4-1/2 in.	1.72 in.
2 in.	6 in.	2.17 in.

### Certifications & Listings

ASTM F1960, ASTM F877, CSA B137.5, NSF/ANSI 14, NSF/ANSI/CAN 61, NSF/ANSI/CAN 372, ASTM E84, CAN/ULC S102.2, ASTM E119, CAN/ULC S101

For listing information, please contact Customer Service.

#### Dimensions (inches)

Part #	Size	Description	A	B	C
UAMPT3C	3/4" x 1/2"	3-Port Closed	5.19	1.62	1.26
UAMPT3O	3/4" x 1/2"	3-Port Open	5.65	1.63	1.26
UAMPT4C	3/4" x 1/2"	4-Port Closed	6.44	1.62	1.26
UAMPT4O	3/4" x 1/2"	4-Port Open	6.91	1.62	1.26
UAMPT6C	3/4" x 1/2"	6-Port Closed	8.96	1.62	1.26
UAMPT6O	3/4" x 1/2"	6-Port Open	9.43	1.62	1.26
UAMPT288SCW	1" x 1/2"	8-Port Closed w/ Mount	10.13	2.11	0.93
UAMPT8SCW	3/4" x 1/2"	8-Port Open w/ Mount	9.89	2.11	0.93
UAMPT284CW	1" x 1/2"	4-Port Closed	7.18	1.91	1.30
UAMPT284OW	1" x 1/2"	4-Port Open	7.64	1.91	1.30
UAMPT286CW	1" x 1/2"	6-Port Closed	9.77	1.91	1.30
UAMPT286OW	1" x 1/2"	6-Port Open	10.23	1.91	1.30
UAMPT28223OW	1" x 1/2" x 3/4"	3-Port Open	6.10	1.91	1.30
UAMPT28224OW	1" x 1/2" x 3/4"	4-Port Open	7.40	1.91	1.30
UAMPT28226OW	1" x 1/2" x 3/4"	6-Port Open	10.00	1.91	1.30
UAMPT2OW	3/4" x 1/2"	2-Port Open	4.56	1.68	1.30
UAMPT4CHW	3/4" x 1/2"	4-Port Closed, Opposing	4.05	2.45	1.30
UAMPT4OHW	3/4" x 1/2"	4-Port Open, Opposing	4.56	2.45	1.30

#### Product Submittal

Name	
Date	
Architect/Owner	
Contractor	
Tag	
Notes	