

SharkBite Stop Valves

Used to control water flow and enables water supply shutoff for servicing and making repairs. Certified for use in Potable water and radiant heating and hydronic heating systems.

Features and Benefits

- Made from high performance DZR LF Brass
- Connects to PEX-A pipe with expansions rings
- Corrosion resistant material
- No missed connections as expansion fittings cannot be dry-fit
- Sleek chrome finish for an attractive appearance
- Quarter-turn full-port brass stop valve

Applications

- Potable water and radiant heating

Specifications

SharkBite expansion fittings shall be installed on SharkBite PEX-A complying with ASTM F876 or CSA B137.5. The fittings shall be made of Engineered Polymer or DZR lead-free Brass and be compliant with ASTM F1960. The fittings shall be used in a potable water or radiant heating/cooling system not to exceed 80 psi @ 200°F, 100 psi @ 180°F, or 160 psi @ 73.4°F.



#UAB23058



#UAB23057

Specification Data

Technical Data

Minimum working temperature 33°F to 73°F at 160 psi
 Maximum working temperature 180°F at 100 psi
 200°F at 80 psi

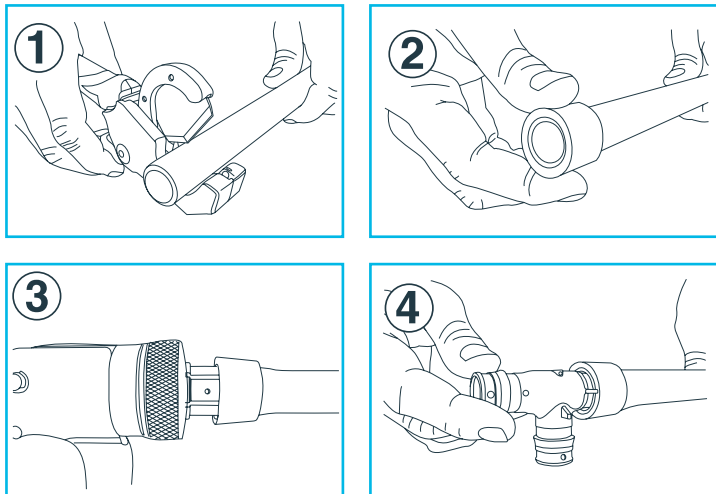
Material

1 Valve Bonnet	DZR LF Brass ¹
2 Seal Ring	PTFE
3 Valve Body	DZR LF Brass ¹
4 Plastic Jacket	PE
5 Seal Ring	PTFE
6 Ball	DZR LF Brass ¹
7 O-ring	NBR
8 Valve Stem	DZR LF Brass ¹
9 Handle	Steel
10 Screw	SST 302
11 Sleeve	Copper
12 Nut	DZR LF Brass ¹

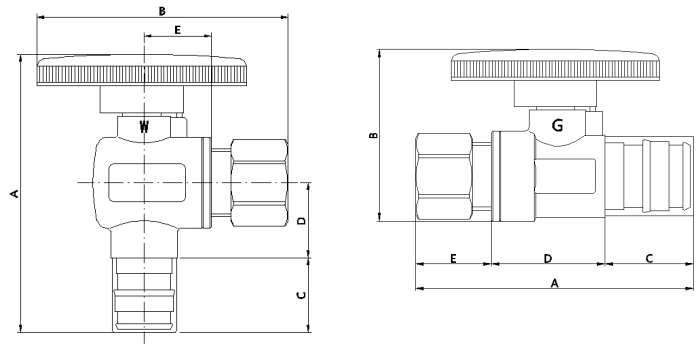
¹ Lead Free for all models, surfaces that are in contact with consumable water contain less than 0.25% lead by weight

Installation Requirements

How to install SharkBite Expansion Fittings products.



- Use pipe cutters to make a square cut of the pipe to length. A rough or uneven cut can result in a weakened joint.
- Slide your expansion ring over the PEX tubing until it overhangs the end of the tubing by no more than 1/8" or until the stop on the ring (if present) touches the tubing.
- Using an approved manual or cordless expansion tool, insert the tool into the PEX pipe and expand the pipe.
 *Note that each pipe size requires the specific expander head, so ensure it is the correct size prior to beginning. The number of expansions will be dictated by the tubing size.
 - 6 expansions for 1/2 in.
 - 8 expansions for 3/4 in.
 - 5 expansions for 1 in.
 It is important to make sure the expander head rotates after each expansion to prevent ridges on the inside of the tubing.
- Once the tubing is expanded, insert the fitting until it hits the shoulder and allow the PEX to contract around the fitting until secure. After several seconds the tubing will secure around the fitting, and your connection is made and ready for use.



#UAB23058

#UAB23057

Dimensions

Description	Part #	A	B	C	D	E
1/2" x 3/8" OD Compression Straight	UAB23057	2.34	1.43	0.70	0.98	0.72
1/2" x 3/8" OD Compression Angle	UAB23058	2.42	2.06	0.70	0.62	0.53

All measurements are displayed in inches

Insertion Depth

Fitting Size	Nominal Pipe Size	Insertion Depth(in)
1/2 in.	1/2 in.	0.72
3/4 in.	3/4 in.	0.97
1 in.	1 in.	1.19

Pipe Type

Compatible with PEX-A pipe

Minimum Distance Between Fittings

- 1/2 in. fittings and pipe 2-1/2 in. space
- 3/4 in. fittings and pipe 3-1/2 in. space
- 1 in. fittings and pipe 4-1/2 in. space

Codes and Standards

- A112.18.1/CSA B125.1
- NSF/ANSI 14
- NSF/ANSI/CAN 61
- NSF/ANSI/CAN 372

