



SHARKBITE PEX

Plumbing a Better Home



Benefits of SharkBite® PEX

PROUDLY AMERICAN MADE



Health/Safety

No glue, solder, or solvents required for the connection process, which keeps potentially dangerous chemicals out of plumbing systems. Additionally, SharkBite PEX pipe eliminates the need for open flames in the house that could be a potential fire hazard. There is no risk of copper traces in water from breakdown of pipe that has been linked to heart disease and Alzheimer's.



Versatile

SharkBite PEX pipe can be installed in dry or wet conditions. SharkBite PEX piping can lend itself to many applications due to its physical properties of flexibility, reliability and installation ease such as hydronic heating, fire protection, etc.



Chlorine Resistance

SharkBite PEX pipe is tested to the highest level of chlorine resistance standards, testing at 100% chlorine at 140°F.



Proven and Guaranteed

SharkBite PEX pipe has been around for more than 35 years with over 12 Billion feet of tubing installed worldwide.



Freeze Resistant

SharkBite PEX pipe is freeze resistant as the pipe can expand and contract as water freezes and thaws within the tubing.



Flexibility

Able to bend pipe around corners which removes the need for 45° or 90° elbows in certain situations. SharkBite has gone through a change in our coiling process that will increase the flexibility of our coiled pipe even more.



Cost Effective

SharkBite PEX pipe is substantially lower in cost than copper pipe—SharkBite PEX tubing costs a third of the price of copper. SharkBite PEX pipe is a fixed cost as prices don't fluctuate daily like copper pipe.

SHARKBITE PEX – CERTIFICATIONS

The letter designations of PEX (A, B, C) Pipe are not related to any type of rating system.



NSF/ANSI 14
NSF/ANSI 61



ASTM F 877



AWWA C904



ASTM F 876



CSA B137.5



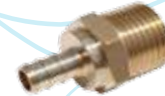
UL 1821

SHARKBITE® PEX BARB FITTINGS

PEX BARB CORE FITTINGS

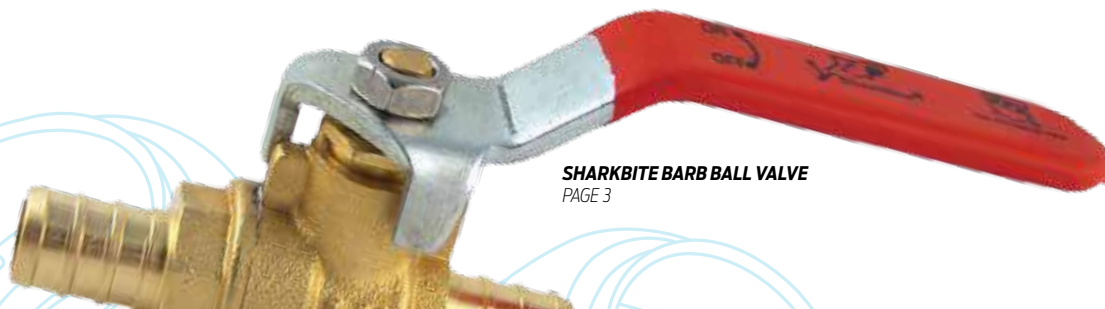
The SharkBite PEX/Barb Connection System is the best option for connecting PEX tubing in water distribution systems when lower material cost is desired. Robustly constructed with Lead Free DZR brass, the SharkBite Barb fittings are corrosion resistant. With a wide range of fittings, manifolds, valves, clamp rings, crimp rings, ball valves and tools available, the SharkBite PEX/Barb Connection System is perfect for your next plumbing project.

PRODUCT DESCRIPTION	PART NUMBER	QTY/ BAG	LIST PRICE
COUPLINGS			
3/8" Lead Free	UC006LF	10	\$1.50
1/2" Lead Free	UC008LF	25	\$1.50
5/8" Lead Free	UC012LF	10	\$2.10
3/4" Lead Free	UC016LF	25	\$2.10
1" Lead Free	UC020LF	10	\$3.80
REDUCING COUPLINGS			
3/8" X 1/2" Reducing Lead Free	UC009LF	10	\$1.50
1/2" X 3/4" Reducing Lead Free	UC058LF	25	\$2.10
3/4" X 5/8" Reducing Lead Free	UC057LF	10	\$2.10
3/4" X 1" Reducing Lead Free	UC060LF	25	\$3.80
THREADED FEMALE ADAPTERS			
1/2" X 3/4" FNPT Lead Free	UC068LF	25	\$4.20
1/2" X 1/2" FNPT Lead Free	UC072LF	25	\$3.00
3/4" X 3/4" FNPT Lead Free	UC088LF	25	\$4.20
1" X 1" FNPT Lead Free	UC094LF	10	\$7.50
THREADED MALE ADAPTERS			
1/2" X 3/4" MNPT Lead Free	UC116LF	25	\$3.80
3/8" X 1/2" MNPT Lead Free	UC118LF	10	\$2.70
1/2" X 1/2" MNPT Lead Free	UC120LF	25	\$2.70
3/4" X 3/4" MNPT Lead Free	UC134LF	25	\$3.80
3/4" X 1/2" MNPT Lead Free	UC138LF	25	\$3.80
3/4" X 1" MNPT Lead Free	UC139LF	10	\$6.80
1" X 1" MNPT Lead Free	UC140LF	10	\$6.80
1" X 3/4" MNPT Lead Free	UC142LF	10	\$6.80
SWEAT FEMALE ADAPTERS			
1/2" X 1/2" Female Sweat Adapter Lead Free	UC600LF	25	\$2.70
3/4" X 3/4" Female Sweat Adapter Lead Free	UC606LF	25	\$3.80
1" X 1" Female Sweat Adapter Lead Free	UC605LF	10	\$6.80
SWEAT MALE ADAPTERS			
1/2" X 1/2" Male Sweat Adapter Lead Free	UC607LF	25	\$2.70
3/4" X 3/4" Male Sweat Adapter Lead Free	UC608LF	25	\$3.80
POLYBUTYLENE ADAPTERS (WITH PB CRIMP RING)			
3/8" PB Coupling Lead Free	UC4006LF	10	\$2.70
1/2" PB Coupling Lead Free	UC4008LF	25	\$2.70
3/4" PB Coupling Lead Free	UC4016LF	25	\$3.80



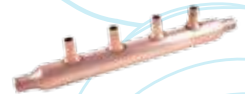
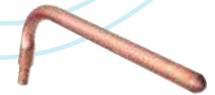


PRODUCT DESCRIPTION	PART NUMBER	QTY/ BAG	LIST PRICE
ELBOWS			
3/8" X 3/8" Lead Free	UC246LF	10	\$2.10
1/2" X 1/2" Lead Free	UC248LF	25	\$2.10
3/4" X 3/4" Lead Free	UC256LF	25	\$2.90
1" X 1" Lead Free	UC260LF	10	\$5.30
REDUCING ELBOWS			
1/2" X 3/8" Lead Free	UC272LF	10	\$2.10
1/2" X 3/4" Lead Free	UC274LF	25	\$2.90
DROP-EAR ELBOWS			
1/2" X 1/2" FNPT Drop Ear Lead Free	UC334LF	25	\$8.40
3/4" X 3/4" FNPT Drop Ear Lead Free	UC340LF	25	\$12.00
3/4" X 1/2" FNPT Drop Ear Lead Free	UC342LF	25	\$12.00
ADAPTER ELBOWS			
1/2" X 1/2" MNPT Lead Free	UC280LF	25	\$4.20
1/2" X 3/4" MNPT Lead Free	UC278LF	25	\$5.90
3/4" X 3/4" MNPT Lead Free	UC286LF	25	\$5.90
3/4" X 3/4" Female Sweat Lead Free	UC626LF	25	\$4.10
3/4" X 3/4" Male Sweat Lead Free	UC628LF	25	\$4.10
TEES			
3/8" X 3/8" X 3/8" Lead Free	UC360LF	10	\$2.60
1/2" X 1/2" X 1/2" Lead Free	UC362LF	25	\$2.60
3/4" X 3/4" X 3/4" Lead Free	UC370LF	25	\$3.60
1" X 1" X 1" Lead Free	UC374LF	10	\$6.40
BULLNOSE TEES			
1/2" X 1/2" X 3/4" Bull Nose Lead Free	UC408LF	25	\$3.60
3/4" X 3/4" X 1" Bull Nose Lead Free	UC413LF	10	\$6.40
REDUCING TEES			
3/8" X 3/8" X 1/2" Reducing Lead Free	UC364LF	10	\$2.60
1/2" X 3/8" X 3/8" Reducing Lead Free	UC452LF	10	\$2.60
1/2" X 1/2" X 3/8" Reducing Lead Free	UC363LF	10	\$2.60
1/2" X 3/8" X 1/2" Reducing Lead Free	UC434LF	10	\$2.60
3/4" X 3/4" X 3/8" Reducing Lead Free	UC417LF	10	\$3.60
3/4" X 3/4" X 1/2" Reducing Lead Free	UC412LF	25	\$3.60
3/4" X 1/2" X 1/2" Reducing Lead Free	UC454LF	25	\$3.60
3/4" X 1/2" X 3/4" Reducing Lead Free	UC444LF	25	\$3.60
1" X 3/4" X 3/4" Reducing Lead Free	UC414LF	10	\$6.40
1" X 1" X 1/2" Reducing Lead Free	UC415LF	10	\$6.40
1" X 1" X 3/4" Reducing Lead Free	UC416LF	10	\$6.40
1" X 3/4" X 1" Reducing Lead Free	UC418LF	10	\$6.40



SHARKBITE BARB BALL VALVE
PAGE 3

PRODUCT DESCRIPTION	PART NUMBER	QTY/ BAG	LIST PRICE
SWIVEL ADAPTERS			
3/8" X 3/8" FNPT Swivel Adapter Lead Free	UC527LF	10	\$3.00
1/2" X 1/2" FNPT Swivel Adapter Lead Free	UC526LF	25	\$3.00
1/2" X 3/4" FNPT Swivel Adapter Lead Free	UC534LF	25	\$6.30
3/4" X 3/4" FNPT Swivel Adapter Lead Free	UC530LF	25	\$6.30
3/4" X 1" Swivel Adapter Lead Free	UC529LF	10	\$11.50
1" X 1" FNPT Swivel Adapter Lead Free	UC594LF	10	\$7.50
SWIVEL ELBOWS			
3/8" X 1/2" FNPT Swivel Elbow Lead Free	UC531LF	10	\$3.10
1/2" X 1/2" FNPT Swivel Elbow Lead Free	UC532LF	25	\$3.10
SWIVEL TOILET CONNECTION ELBOWS			
1/2" X 7/8" Straight Swivel Toilet Connectors Lead Free	UC528LF	10	\$4.20
3/8" X 7/8" Elbow Swivel Toilet Connectors Lead Free	23068LF	6	\$4.40
1/2" X 7/8" Elbow Swivel Toilet Connectors Lead Free	23067LF	6	\$4.40
PLUGS			
3/8" Lead Free	UC512LF	10	\$0.90
1/2" Lead Free	UC514LF	25	\$0.90
3/4" Lead Free	UC518LF	25	\$1.25
1" Lead Free	UC520LF	10	\$2.30
COPPER STUB OUT ELBOWS (ALL COPPER STUB OUT ELBOWS ARE LEAD FREE)			
1/2" X Closed (4" X 8") Lead Free	22791	12	\$8.40
3/8" X 1/2" (4" X 4") Lead Free	23069	6	\$7.30
1/2" X 1/2" (4" X 4") Lead Free	23070	6	\$7.30
COPPER MANIFOLDS WITH BARB BRANCHES (1" TRUNK WITH 3/4" BARB INLETS & OUTLETS AND 1/2" BARB PORTS – 2" ON CENTER)			
3 Port Closed Lead Free	22783	1	\$25.00
3 Port Open Lead Free	22784	1	\$25.00
4 Port Closed Lead Free	22785	1	\$30.00
4 Port Open Lead Free	22786	1	\$30.00
6 Port Closed Lead Free	22787	1	\$35.00
6 Port Open Lead Free	22788	1	\$35.00
8 Port Closed Lead Free	22789	1	\$40.00
8 Port Open Lead Free	22790	1	\$40.00
BARB MANIFOLDS WITH BALL VALVES			
Manifold 16 Port with Ball Valves Lead Free	RM22716	1	\$420.00
Manifold 20 Port with Ball Valves Lead Free	RM22720	1	\$550.00
Manifold 24 Port with Ball Valves Lead Free	RM22724	1	\$630.00
BARB BALL VALVES			
1/2" Lead Free	22461LF	12	\$9.60
3/4" Lead Free	22462LF	12	\$13.50
1" Lead Free	22463LF	6	\$24.00





PRODUCT DESCRIPTION	PART NUMBER	QTY/ BAG	LIST PRICE
PEX POLY ALLOY FITTINGS			
The SharkBite PEX Poly Alloy Fittings range is an excellent option when non-metallic plumbing solutions are required.			
COUPLINGS			
1/2" Straight Coupling Lead Free	UP008	25	\$0.75
3/4" Straight Coupling Lead Free	UP016	25	\$1.05
1" Straight Coupling Lead Free	UP020	25	\$1.90
REDUCING COUPLINGS			
3/4" X 1/2" Reducing Coupling Lead Free	UP058	25	\$0.75
1" X 3/4" Reducing Coupling Lead Free	UP060	25	\$1.90
CONNECTORS			
1/2" X 1/2" MNPT Straight Connector Lead Free	UP120	25	\$1.35
3/4" X 3/4" MNPT Straight Connector Lead Free	UP134	25	\$1.90
1" X 1" MNPT Straight Connector Lead Free	UP140	25	\$3.40
REDUCING CONNECTORS			
3/4" X 1/2" MNPT Reducing Connector Lead Free	UP138	25	\$1.90
ELBOWS			
1/2" Elbow Lead Free	UP248	25	\$1.05
3/4" Elbow Lead Free	UP256	25	\$1.45
1" Elbow Lead Free	UP260	25	\$2.60
MALE ELBOWS			
1/2" X 1/2" MNPT Elbow Lead Free	UP280	25	\$2.10
REDUCING ELBOWS			
3/4" X 1/2" Elbow Lead Free	UP274	25	\$1.45
TEES			
3/8" Tee Lead Free	UP360	10	\$1.30
1/2" Tee Lead Free	UP362	25	\$1.30
3/4" Tee Lead Free	UP370	25	\$1.80
1" Tee Lead Free	UP374	25	\$3.20
REDUCING TEES			
1/2" X 1/2" X 3/4" Tee Lead Free	UP408	25	\$1.80
3/4" X 3/4" X 1/2" Tee Lead Free	UP412	25	\$1.80
3/4" X 1/2" X 3/4" Tee Lead Free	UP444	25	\$1.80
3/4" X 1/2" X 1/2" Tee Lead Free	UP454	25	\$1.80
1" X 3/4" X 3/4" Tee Lead Free	UP414	25	\$3.20
1" X 1" X 1/2" Tee Lead Free	UP415	25	\$3.20
1" X 1" X 3/4" Tee Lead Free	UP416	25	\$3.20
PLUGS			
1/2" Plug Lead Free	UP514	25	\$0.45
3/4" Plug Lead Free	UP518	25	\$0.65
1" Plug Lead Free	UP520	25	\$0.85
ADAPTERS			
1/2" Female Swivel Adapter Lead Free	UP526	25	\$1.50
3/8" Female Swivel Adapter Lead Free	UP527	10	\$1.50
1/2" X 1/2" Swivel Elbow Adapter Lead Free	UP532	25	\$1.50

PRODUCT DESCRIPTION	PART NUMBER	QTY/ BAG	LIST PRICE
PEX BARB STOP & FIXTURE SUPPLY FITTINGS			
PEX CHROME PLATED 1/4 TURN ANGLE STOPS			
1/2" X 3/8" OD Compression Angle Stop (Quarter Turn) Lead Free	23058LF	12	\$9.00
1/2" X 1/4" OD Compression Angle Stop (Quarter Turn) Lead Free	23056LF	6	\$9.00
PEX CHROME PLATED 1/4 TURN STRAIGHT STOPS			
3/8" X 3/8" Straight Stop (Quarter Turn) Lead Free	23382LF	6	\$9.00
1/2" X 3/8" OD Compression Straight Stop (Quarter Turn) Lead Free	23057LF	12	\$9.00
PEX CHROME PLATED STRAIGHT STOPS			
1/2" X 3/8" Compression Straight Stop Lead Free	23059LF	24	\$9.00
1/2" X 3/8" Straight Stop Lead Free	23062LF	6	\$9.00
1/2" X 1/2" MPT Straight Stop Lead Free	23061LF	6	\$9.00
1/2" X 1/2" Straight Stop Lead Free	23063LF	12	\$9.00
PEX CHROME PLATED ANGLE STOPS			
1/2" X 3/8" Compression Angle Stop Lead Free	23060LF	12	\$9.00
1/2" X 3/4" MHT Angle Stop Lead Free	23064LF	6	\$12.50

PEX BARB ACCESSORIES			
CLAMP RINGS (STAINLESS STEEL)			
3/8"	UC952	100	\$0.45
1/2"	UC953	100	\$0.45
5/8"	UC954	50	\$0.50
3/4"	UC955	100	\$0.55
1"	UC956	50	\$0.75
CRIMP RINGS (COPPER)			
3/8"	23101	100	\$0.35
1/2"	23102	100	\$0.35
3/4"	23103	100	\$0.45
1"	23104	25	\$0.70
PEX BEND SUPPORTS, SUSPENSION CLAMPS AND INSULATORS			
3/8" J Hook Pex Pipe Clamp (10 Pack)	23065	12	\$3.00
1/2" J Hook Pex Pipe Clamp (10 Pack)	23220	12	\$3.00
3/4" J Hook Pex Pipe Clamp (10 Pack)	23221	12	\$3.00
1/2" Insulated Suspension Clamp (10 Pack)	23071A10	6	\$8.00
3/4" Insulated Suspension Clamp (10 Pack)	23072A10	6	\$8.50
1" Insulated Suspension Clamp (10 Pack)	23073A10	6	\$9.00
1/2" Pipe Insulator (10 Pack)	23074A10	6	\$10.00
3/4" Pipe Insulator (10 Pack)	23075A10	6	\$12.00
1" Pipe Insulator (10 Pack)	23076A10	6	\$16.00
1/2" Polymer Bend Support with mounting bracket	23050	12	\$2.70
3/4" Polymer Bend Support	23051	6	\$4.50
1/2" Metal Pipe Support	23053	12	\$3.50
3/4" Metal Pipe Support	23054	12	\$5.50





PRODUCT DESCRIPTION	PART NUMBER	QTY/ BAG	LIST PRICE
PEX BARB TOOLS			

SharkBite PEX/Barb tools provide everything needed to ensure a dependable trouble-free installation or repair of PEX/Barb Connection Systems. From our PEX crimp tool to our plastic tubing cutters, our line of rugged tools provides everything needed to cut, secure or remove PEX pipe.

PEX CRIMP TOOLS			
3/8" Large PEX Crimp Tool	23077	1	\$120.00
1/2", 3/4" PEX Combo Crimp Tool	23251	2	\$130.00
3/8", 1/2", 3/4" PEX Pocket Crimp Tool	23383	1	\$60.00
PEX CRIMP TOOL KITS			
PEX Crimp Tool Kit	23100	2	\$220.00
CRIMP RING GAUGES			
3/8", 1/2", 3/4" PEX Crimp Ring Gauge	23080	6	\$6.50
PEX CLAMP TOOLS			
PEX Clamp Tool One-hand Operation	UC961	1	\$340.00
PEX Clamp Tool Standard Handles	23081	1	\$120.00
PEX TUBING CUTTERS			
PEX Tubing Cutter	U701	1	\$20.00
CRIMP RING REMOVAL TOOL			
PEX Crimp Ring Removal Tool	23055	6	\$130.00

PRESSURE REGULATING VALVES			
EB45-DUPE LEAD FREE DOUBLE UNION PEX ENDS (FACTORY SET AT 45 PSI, ADJUSTABLE FROM 10-70 PSI. INTEGRAL BY-PASS FEATURE. LISTED BY IAPMO & ASSE)			
3/4" EB45-DUPE Double Union PEX Ends	23891-0045	1	148.00
3/4" EB45-DUPE Double Union PEX Ends Metal Top	24471-0045	1	162.00
1" EB45-DUPE Double Union PEX Ends	23942-0045	1	192.00
EB25-DUPE LEAD FREE DOUBLE UNION PEX ENDS (FACTORY SET AT 45 PSI, ADJUSTABLE FROM 20-90 PSI. INTEGRAL BY-PASS FEATURE. FULL CARTRIDGE W/PRESSURE INDICATOR. LISTED BY IAPMO & ASSE)			
3/4" EB25-DUPE Double Union PEX Ends	23957-0045	1	178.00
1" EB25-DUPE Double Union PEX Ends	23140-0045	1	230.00

THERMOSTATIC MIXING VALVES			
HG110-D LEAD FREE (ASSE 1017, 1069, 1070, & CSA B 125.3)			
1/2" HG110-D with Barb Connections and Integral Checks	24506	1	160.00
3/4" HG110-D with Barb Connections and Integral Checks	24507	1	160.00
HG160 LEAD FREE (ASSE 1069, 1070, & CSA B125.3)			
1/2" HG160 with Barb Connections and Integral Checks	24531	1	170.00
3/4" HG160 with Barb Connections and Integral Checks	24532	1	170.00

SHARKBITE PEX PIPE
PAGE 7



SHARKBITE® PEX TUBING

SharkBite PEX tubing is a cross-linked polyethylene tubing for a wide range of residential and commercial plumbing applications. Manufactured without an oxygen barrier for potable water systems and with an oxygen barrier for radiant and hydronic heating applications. A repeating SharkBite imprint pattern provides a visual aid to determine if the tube has been inserted all the way into the SharkBite Push-Fit Fitting. This feature only works if the tubing is cut between the SharkBite imprint pattern.

APPROVALS: The SharkBite tubing with and without oxygen barrier is approved for use in all model codes in the US and Canada for use in hydronic and potable water systems and is certified to the following standards: ASTM F876, ASTM F877, CSA B137.5 and AWWA C904.

PRODUCT DESCRIPTION	PART NUMBER	PART NUMBER	PART NUMBER	PACK/ QTY	LIST PRICE
POTABLE WATER PEX TUBING					
GREY PEX TUBING (COILS)	GREY				
1/4" (3/8" OD) 50' Coil Grey Tubing	U850G50			1	\$20.00
PEX TUBING (COILS)	WHITE	RED	BLUE		
3/8" 50' Coil Tubing	U855W50			1	\$22.50
3/8" 100' Coil Tubing	U855W100	U855R100	U855B100	1	\$45.00
1/2" 25' Coil Tubing	U860W25W	U860R25W	U860B25W	1	\$12.50
1/2" 50' Coil Tubing	U860W50W	U860R50W	U860B50W	1	\$25.00
1/2" 100' Coil Tubing	U860W100W	U860R100W	U860B100W	1	\$50.00
1/2" 300' Coil Tubing	U860W300W	U860R300W	U860B300W	1	\$150.00
1/2" 500' Coil Tubing	U860W500W	U860R500W	U860B500W	1	\$250.00
3/4" 25' Coil Tubing	U870W25W	U870R25W	U870B25W	1	\$22.50
3/4" 50' Coil Tubing	U870W50W	U870R50W	U870B50W	1	\$45.00
3/4" 100' Coil Tubing	U870W100W	U870R100W	U870B100W	1	\$90.00
3/4" 300' Coil Tubing	U870W300W	U870R300W	U870B300W	1	\$270.00
3/4" 500' Coil Tubing	U870W500W	U870R500W	U870B500W	1	\$450.00
1" 100' Coil Tubing	U880W100W	U880R100W	U880B100W	1	\$160.00
1" 300' Coil Tubing	U880W300W	U880R300W	U880B300W	1	\$480.00
1" 500' Coil Tubing	U880W500W	U880R500W	U880B500W	1	\$800.00
1-1/4" 100' Coil Tubing	U885W100			1	\$300.00
1-1/2" 100' Coil Tubing	U890W100			1	\$450.00
2" 100' Coil Tubing	U895W100			1	\$850.00
GREY PEX TUBING (STRAIGHT LENGTHS)	GREY				
1/4" (3/8" OD) 5' Length Grey Tubing	U850G5			20	\$2.00
PEX TUBING (STRAIGHT LENGTHS)	WHITE	RED	BLUE		
3/8" 5' Length Tubing	U855W5			10	\$2.25
3/8" 10' Length Tubing	U855W10			10	\$4.50
1/2" 5' Length Tubing	U860W5	U860R5	U860B5	10	\$2.50
1/2" 10' Length Tubing	U860W10	U860R10	U860B10	10	\$5.00
1/2" 20' Length Tubing	U860W20	U860R20	U860B20	10	\$10.00
3/4" 5' Length Tubing	U870W5	U870R5	U870B5	10	\$4.50
3/4" 10' Length Tubing	U870W10	U870R10	U870B10	10	\$9.00
3/4" 20' Length Tubing	U870W20	U870R20	U870B20	10	\$18.00
1" 5' Length Tubing	U880W5	U880R5	U880B5	5	\$8.00
1" 10' Length Tubing	U880W10	U880R10	U880B10	5	\$16.00
1" 20' Length Tubing	U880W20	U880R20	U880B20	5	\$32.00
1-1/4" 20' Length Tubing	U885W20			5	\$60.00
1-1/2" 20' Length Tubing	U890W20			5	\$90.00
2" 20' Length Tubing	U895W20			3	\$170.00



PRODUCT DESCRIPTION	PART NUMBER	PACK/ QTY	LIST PRICE
SPECIAL APPLICATION PEX TUBING			
RECLAIMED WATER PEX TUBING (FOR USE WITH GRAY WATER, RAINWATER HARVESTING AND RECLAIMED WATER SYSTEMS ONLY. AVAILABLE IN 100 AND 300 FOOT PURPLE COILS RANGING IN SIZE FROM 1/2" – 1".)			
SharkBite Reclaimed Water PEX is cross-linked polyethylene tubing for gray water, rainwater harvesting and reclaimed water systems only. Manufactured with a purple color background, the tubing meets color code requirements of national and state code bodies to clearly identify reclaimed water lines. SharkBite Reclaimed Water PEX is manufactured and is available in 1/2" to 1".			
1/2" 100' Coil Purple Tubing	U860P100	1	\$60.00
1/2" 300' Coil Purple Tubing	U860P300	1	\$180.00
3/4" 100' Coil Purple Tubing	U870P100	1	\$110.00
3/4" 300' Coil Purple Tubing	U870P300	1	\$330.00
1" 100' Coil Purple Tubing	U880P100	1	\$190.00
1" 300' Coil Purple Tubing	U880P300	1	\$570.00
OXYGEN BARRIER PEX TUBING (COILS AVAILABLE IN 100, 300, 500 AND 1000 FOOT COILS RANGING IN SIZE FROM 3/8" – 1".)			
Use for radiant and hydronic heating applications. The oxygen diffusion barrier is applied to the exterior and limits oxygen permeation through the tubing wall in hydronic heating applications. This prevents corrosion of ferrous metal parts in the heating system.			
3/8" 100' Coil PEX Tubing Orange Color w/ Black Text	U8550100	1	\$70.00
3/8" 300' Coil PEX Tubing Orange Color w/ Black Text	U8550300	1	\$210.00
3/8" 500' Coil PEX Tubing Orange Color w/ Black Text	U8550500	1	\$350.00
1/2" 100' Coil PEX Tubing Orange Color w/ Black Text	U8600100	1	\$70.00
1/2" 300' Coil PEX Tubing Orange Color w/ Black Text	U8600300	1	\$210.00
1/2" 500' Coil PEX Tubing Orange Color w/ Black Text	U8600500	1	\$350.00
1/2" 1000' Coil PEX Tubing Orange Color w/ Black Text	U86001000	1	\$700.00
5/8" 300' Coil PEX Tubing Orange Color w/ Black Text	U8650300	1	\$300.00
3/4" 100' Coil PEX Tubing Orange Color w/ Black Text	U8700100	1	\$130.00
3/4" 300' Coil PEX Tubing Orange Color w/ Black Text	U8700300	1	\$390.00
3/4" 500' Coil PEX Tubing Orange Color w/ Black Text	U8700500	1	\$650.00
3/4" 1000' Coil PEX Tubing Orange Color w/ Black Text	U87001000	1	\$1,300.00
1" 100' Coil PEX Tubing Orange Color w/ Black Text	U8800100	1	\$225.00
1" 300' Coil PEX Tubing Orange Color w/ Black Text	U8800300	1	\$675.00
1" 500' Coil PEX Tubing Orange Color w/ Black Text	U8800500	1	\$1,125.00
OXYGEN BARRIER PEX TUBING (STRAIGHT LENGTHS AVAILABLE IN 20 FOOT STICKS RANGING IN SIZE FROM 1/2" – 1".)			
Use for radiant and hydronic heating applications. The oxygen diffusion barrier is applied to the exterior and limits oxygen permeation through the tubing wall in hydronic heating applications. This prevents corrosion of ferrous metal parts in the heating system.			
1/2" 20' Length O2 barrier PEX Tubing Orange Color	U860020	10	\$14.00
3/4" 20' Length O2 barrier PEX Tubing Orange Color	U870020	10	\$26.00
1" 20' Length O2 barrier PEX Tubing Orange Color	U880020	5	\$45.00

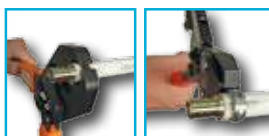
HOW TO INSTALL SHARKBITE PEX BARB PRODUCTS



CUT:
Cut the pipe square removing rough edges and debris.



SET:
Slide the ring over the pipe and insert the fitting. Make sure the ring is 1/8" - 1/4" from the edge of the pipe.



PRESS:
Apply pressure to secure the ring over the pipe and fitting.



DONE.

LIMITED WARRANTY – SHARKBITE AND CASH ACME PRODUCTS

WHAT DOES THIS WARRANTY COVER?

Subject to conditions outlined in this statement, RWC (in the USA, Reliance Worldwide Corporation and in Canada, Reliance Worldwide Corporation (Canada) Inc.) warrants SharkBite® and Cash Acme® products, when used and installed in accordance with the requirements set forth below, to be free from defects in material and workmanship for the applicable warranty period.

HOW LONG DOES THE WARRANTY COVERAGE LAST?

PRODUCT(S)	WARRANTY PERIOD (FROM THE DATE OF SALE)
SharkBite PEX Tubing	Twenty-Five (25) years
SharkBite Push-Fit Fittings	Twenty-Five (25) years
SharkBite Brass PEX Barbed-Fittings	Five (5) years
SharkBite Copper PEX Manifolds	Five (5) years
All other SharkBite products	Two (2) years
All Cash Acme products	One (1) year

Proof of purchase is required to validate the warranty period. If proof of purchase is not available, the warranty period shall default to the date of manufacture for each product. **NOTE:** Warranty is applicable to product installed in the country it was purchased.

WHAT ARE THE CONDITIONS OF THIS WARRANTY?

1. All products must be installed in accordance with all applicable codes and in accordance with any local, state, provincial or federal requirements.
2. The installing contractor must use construction techniques compliant with applicable codes to install the range of products and use the product(s) within the design parameters specified in any installation guidelines and technical notes for the applicable system. This shall include field pressure testing prior to concealing with concrete or by other means.
3. Products must not be installed in a system that may operate at temperatures or at pressures that exceed the printed rating on the product, packaging or installation instructions.
4. Evidence of tampering, mishandling, neglect, accidental damage, freeze damage or unauthorized modifications or repairs that cause damage to RWC warranted products void any warranty coverage of those particular products. It is expressly understood that failure as a result of any freezing fluids within the pipes does not constitute a defect in material or workmanship and shall not be covered by this warranty.
5. Although RWC provides a plumbing system to facilitate a complete installation, other manufacturers tubing and/or fittings may be installed in any given installation provided manufacturing of the tubing and/or fittings demonstrates compliance with the applicable ASTM standards, and the product has been certified by a recognized third-party testing agency. The RWC product in the given installation will continue to be covered under this warranty. **NOTE:** RWC will be responsible only for proven defects in material or workmanship in RWC products. Problems in products manufactured by another company should be reported to that manufacturer.

HOW DO YOU GET SERVICE?

In order to be eligible for service under this warranty you must return the defective product (with shipping charges prepaid) to the original place of purchase. You also must include the model number of the product, the original date of purchase, proof of purchase and the nature of the problem. Products returned without shipping charges prepaid will be refused. For questions or inquiries to the Manufacturer, in the U.S. call 1-877-700-4242 and in Canada 1-888-820-0120.

WHAT WILL RWC DO?

If, after inspection, we find that a product covered by this limited warranty has failed due to a defect in material or workmanship during the specified warranty period, we will repair or replace, at our sole option, free of charge, the defective product during normal working hours and through a place of business as determined by RWC. This shall constitute the sole and exclusive remedy for any defective product.

WHAT DOES THIS WARRANTY NOT COVER?

RWC shall not be responsible for any incidental, indirect, contingent, special or consequential damages, including without limitation, lost profits or the cost of repairing or replacing other property which is damaged if these warranted products do not work properly, other costs resulting from labor charges, delays, vandalism, negligence, fouling caused by foreign material, damage from adverse water conditions, adverse chemical environments, or any other circumstances over which has no control. This limitation applies even if RWC could have foreseen or has been advised of the possibility of these damages. This warranty shall be invalidated by any abuse, misuse, misapplication or improper installation of the product.

HOW DOES STATE/PROVINCIAL LAW APPLY?

Some States/Provinces do not allow limitations on how long an implied warranty lasts, and some States/Provinces do not allow the exclusion or limitation of incidental or consequential damages. Therefore, the above limitations may not apply to you. This Limited Warranty gives you the specific legal rights, and you may have other rights that vary from State/Province to State/Province. You should consult applicable State/Provincial laws to determine your rights.

SO FAR AS IS CONSISTENT WITH APPLICABLE STATE/PROVINCIAL/FEDERAL LAW, THE EXPRESS WARRANTY SET FORTH HEREIN IS THE ONLY WARRANTY GIVEN BY RWC WITH RESPECT TO THE SHARKBITE® AND CASH ACME® PRODUCTS AND RWC MAKES NO OTHER WARRANTIES, EXPRESSED OR IMPLIED, AND HEREBY SPECIFICALLY DISCLAIMS ALL OTHER WARRANTIES, EXPRESSED OR IMPLIED, INCLUDING BUT NOT LIMITED TO THE IMPLIED WARRANTIES OF MERCHANTABILITY AND FITNESS FOR A PARTICULAR PURPOSE.

MADE IN THE USA

SharkBite® PEX pipe is an economical piping solution approved for use in both hot and cold plumbing installations. Meeting the highest chlorine resistance standards and utilizing the most energy efficient manufacturing processes, our PEX pipe is proudly produced in Cullman, Alabama. We comprehensively own our manufacturing process from start to finish, so every piece of SharkBite PEX pipe is guaranteed from concept to delivery.

PEX pipe was introduced to North America in 1984 due to European market success, and was tested extensively for durability and material performance. All USA-installed PEX pipe must meet the qualification requirements as specified in the ASTM PEX Standards. SharkBite PEX pipe can bend up to six times the outside diameter of the pipe—which is the maximum bend radius recommended by PEX pipe manufacturers.

SharkBite PEX pipe can be used in a variety of applications including:

- Fire suppression systems (residential fire sprinklers)
- Municipal water service pipe for use in underground applications
- Radiant heating systems for suspended floor systems or in slab construction
- Snow and ice melt systems for sidewalks, driveways, entrances, and ramps
- Turf conditioning for greenhouses, golf courses, and sports fields
- Water reuse and reclamation systems

Discover the flexibility of SharkBite PEX.



**Manufactured and Distributed by
Reliance Worldwide Corporation**

2727 Paces Ferry Road SE Suite 1800, Building 2
Atlanta, GA 30339

Phone: 1-877-700-4242 • Fax: 1-877-700-4280

www.rwc.com | www.sharkbite.com | www.cashacme.com

