

SharkBite™

Brass Male Sweat Adapter

SharkBite™ expansion fittings are designed for use with PEX-a tubing and must be used in conjunction with SharkBite expansion rings. SharkBite expansion fittings have a 25-year system warranty when used with SharkBite PEX-a tubing.

Approved Applications

Residential and commercial potable water, recirculation, reclaimed water systems, hydronic heating/cooling (up to 50% glycol concentration) and direct burial.

Specification Data

Materials

Body Lead-Free DZR Brass

Performance

Max Working Pressure

80 psi	at	200°F
100 psi	at	180°F
160 psi	at	73.4°F

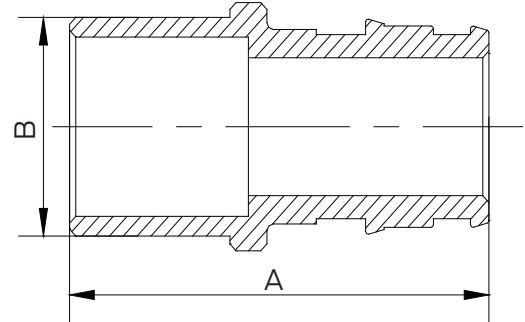
Minimum Length of Pipe Connecting Two Fittings

Fittings/Pipe Size	Min. Length	Insertion Depth
1/2 in.	2 in.	0.72 in.
3/4 in.	2-1/2 in.	0.97 in.
1 in.	3 in.	1.19 in.
1-1/4 in.	4-1/2 in.	1.46 in.
1-1/2 in.	4-1/2 in.	1.72 in.
2 in.	6 in.	2.17 in.

Certifications & Listings

ASTM F1960, ASTM F877, CSA B137.5, NSF/ANSI 14, NSF/ANSI/CAN 61, NSF/ANSI/CAN 372, ASTM E84, CAN/ULC S102.2, ASTM E119, CAN/ULC S101

For listing information, please contact Customer Service.



Dimensions (inches)

Part #	Size	A	B
UAB607	1/2" x 1/2" SWT	1.34	0.71
UAB608	3/4" x 3/4" SWT	1.81	0.87
UAB609	1" x 1" SWT	2.20	1.14
UAB682	1/2" x 3/4" SWT	1.46	0.87
UAB684	3/4" x 1/2" SWT	1.57	0.71
UAB686	3/4" x 1" SWT	1.85	1.14
UAB143535M	1-1/4" x 1-1/4" SWT	2.62	1.38
UAB144141M	1-1/2" x 1-1/2" SWT	2.87	1.63
UAB145454M	2" x 2" SWT	3.72	2.13

Product Submittal

Name	
Date	
Architect/Owner	
Contractor	
Tag	
Notes	