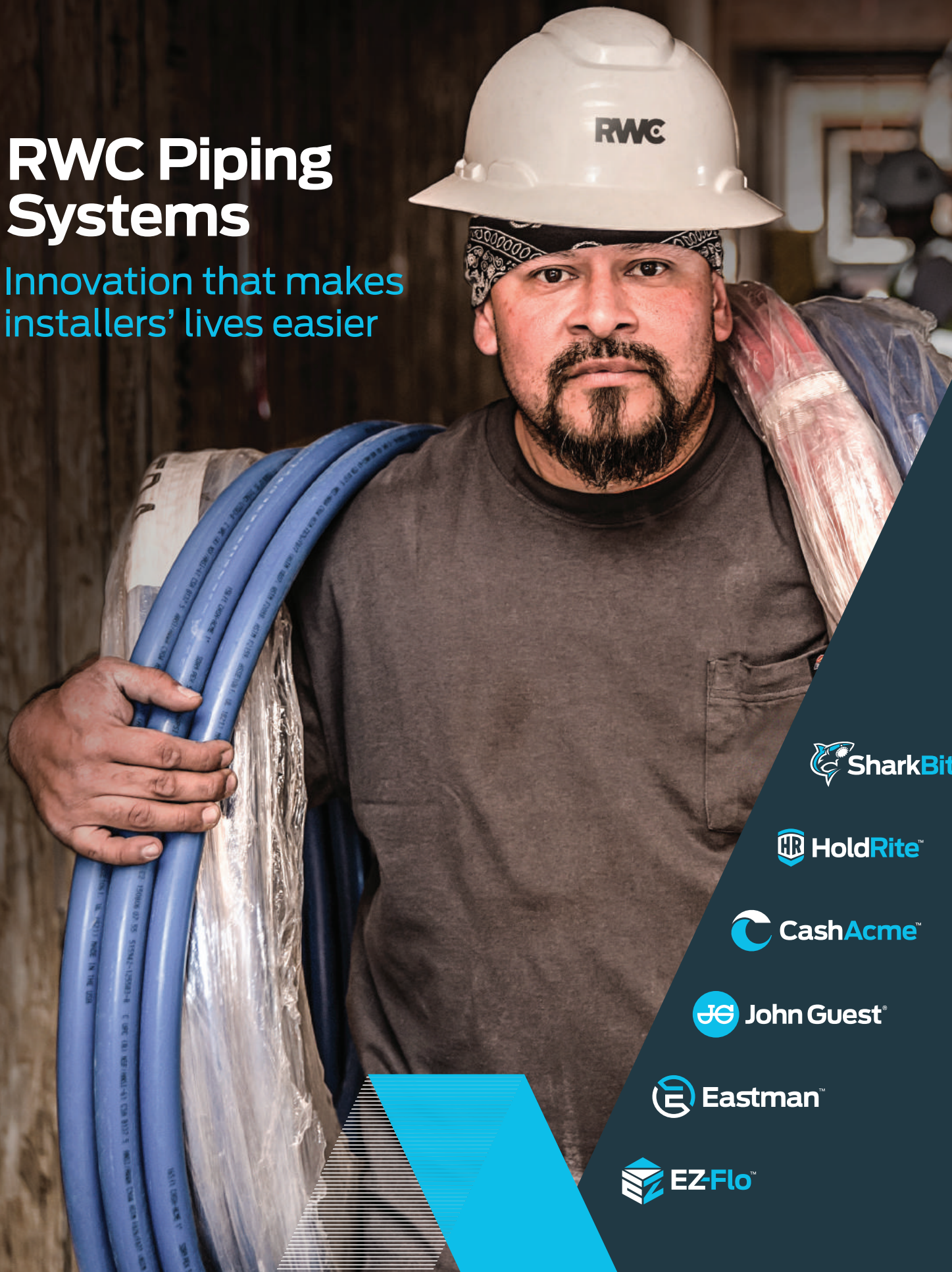


Plumbing Matters. We Make It Better.™



RWC Piping Systems

Innovation that makes installers' lives easier



About RWC

Established in 1949, RWC is a global leader in water control systems and plumbing solutions for domestic, commercial and industrial applications. RWC owns the manufacturing process from start to finish.

Global scale, local service



14

Manufacturing Facilities



29

Distribution Centers



70+

Years of engineering experience



250+

Patents



US Manufacturing and Distribution Center located in Cullman, AL

Why RWC Piping Systems?

RWC offers versatile PEX pipe and fitting solutions to meet the needs of the PRO.



Versatility

RWC piping systems offer brass and poly Push-to-Connect, Expansion and Crimp fittings – with PEX-A and PEX-B pipe.



Guaranteed

25-Year warranty including 10-year consequential damage coverage.



Ease of Install

Push-to-Connect doesn't require tools to make a connection, so there is less chance of error. **Expansion** fittings can be simply installed using any **expansion** tool. Poly Crimp fittings have tabs to hold ring in position for easier connection.













Peace of Mind

No soldering, glue or solvents are required for installation. This keeps chemicals out of the potable water supply and reduces the risk of fire.



Fittings and Pipe Overview

Fitting	Pipe Compatibility	Certification	Fitting Material Offering	Sizes	Immediate Pressure Testing	Max Pressure Rating	No tools or rings required for connection	For More Info
 EvoPEX Push-to-connect	PEX-a or PEX-b	ASSE 1061	Polymer (SS 316 retainer)	1/2" - 1"	✓	160 psi	✓	
NEW!  Brass/Polymer Expansion	PEX-a	F1960	Brass and Polymer	1/2" - 2"	x	160 psi	x	
 Brass/Polymer Crimp	PEX-a, PEX-b, or PEX-c	F1807 (brass) F2098 (poly)	Brass and Polymer	Poly 1/2" - 1" Brass 1/2" - 2"	✓	160 psi	x	
 Brass Push-to-Connect	Copper, CPVC, PEX, PE-RT, HDPE SDR 9	ASSE 1061	Brass (SS 316 retainer)	1/2" - 2"	✓	200- 250 psi	✓	
 John Guest Prolock	Copper, CPVC, PEX, PE-RT	ASSE 1061	Polymer	1/2" - 1"	✓	160 psi	✓	

Pipe	Compatible Fittings	Certification	UV Rating	Chloramine Resistance	Bend Radius (unsupported)	Manufactured	Sizes	Coil lengths	Stick lengths	Color Options	Compatible with HoldRite Pipe Supports	Plenum/Fire Resistance	For More Info
 PEX-a	ASSE 1061, F1960, F1807, F2098	ASTM F876 and ASTM F877	6 months	Highest rating (5): Continuous recirculation hot water at 140F, 100% of time	6 x O.D.	Cullman, Alabama	1/2" - 1" 1-1/4", 1-1/2" and 2"coming soon	100', 300' (1/2" and 3/4") 100' (1")	10' and 20'	blue, red and white	✓	ASTM E84 and ASTM E119	
 PEX-b	ASSE 1061, F1807, F2098	ASTM F876 and ASTM F877	6 months	Highest rating (5): Continuous recirculation hot water at 140F, 100% of time	8 x O.D.	Cullman, Alabama	1/2" - 2"	100', 300', 500' (1/2" and 3/4") 100', 300', 500' (1") 100' (1 1/4" - 2")	10' and 20'	blue, red and white	✓	ASTM E84 and ASTM E119	

PEX Fitting Systems



SharkBite EvoPEX Fittings

- Compatible with PEX-a and PEX-b (PEX pipe only).
- Available in 1/2"-1"
- No special tools, crimping, glue or soldering required
- A green visual indicator provides instant assurance that a secure and permanent connection has been made



SharkBite Expansion Fittings

- Compatible with PEX-a
- Available in 1/2"-2"
- Brass and poly
- Certified for potable water and radiant heating applications, SharkBite's brass and poly expansion fittings can be used to connect PEX-a with PEX rings



SharkBite Crimp/Barb Fittings

- F1807 Brass and F2159 Poly
- Compatible with PEX-a and PEX-b
- Poly 1/2"-1"
- Brass 1/2"-2"
- Brass and poly
- Certified for potable water and radiant heating applications, SharkBite's brass and poly fittings can be used to connect PEX pipe with copper crimp rings or stainless-steel clamps



SharkBite Brass/Transition Fittings

- Compatible with PEX-a and PEX-b
- Available in 1/2"-2"
- No special tools, crimping, glue or soldering required
- SharkBite's durable, field-proven brass push-to-connect fittings are ideal for quick and effective repairs and installations
- The brass push-to-connect fittings are compatible with more than five types of pipe including PEX, copper, CPVC, PE-RT & HDPE



John Guest ProLock Fittings

- Compatible with PEX-a and PEX-b
- Available in 1/2"-1"
- No special tools, crimping, glue or soldering required
- Push-to-connect fittings compatible with PE-RT, PEX, copper, and CPVC pipe
- Twist-to-lock design features an audible click and indicator marks to signal a secure connection, increasing confidence and reducing the risk of installation errors
- Requires no special tools, crimping, glue or soldering, increasing productivity



PEX Pipe

- Available in PEX-a and PEX-b, in both coils and sticks
- PEX-b is 1/2"-1" in red white and blue
- PEX-b 1/4"-2" is white only
- PEX-a is 1/2"-1" in red white and blue
- **1-1/4", 1-1/2" and 2" white coming soon**
- Sticks 10' and 20'
- Coils 25', 50', 100', 300'

Valves and Supply Stops



SharkBite Ball Valves

- Compatible with PEX-a and PEX-b
- Push-to-Connect available in 1/2"-2"
- Crimp available in 1/2"-1"
- Expansion available in 1/2"-1"
- Available in push-to-connect, expansion and crimp connections



Cash Acme Thermostatic Mixing Valves

- Available in 1/2"-1"
- Available in push-to-connect, expansion, threaded, sweat, CPVC and brass crimp connections



Cash Acme Pressure Reducing Valves

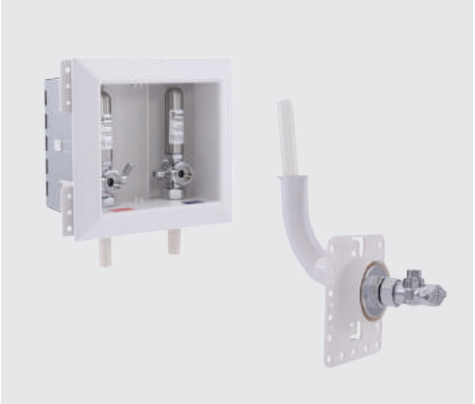
- Available in 1/2"-2"
- All connection ends – available in push-to-connect, crimp, expansion, threaded, CPVC and sweat connections



SharkBite and Eastman Stop Valves

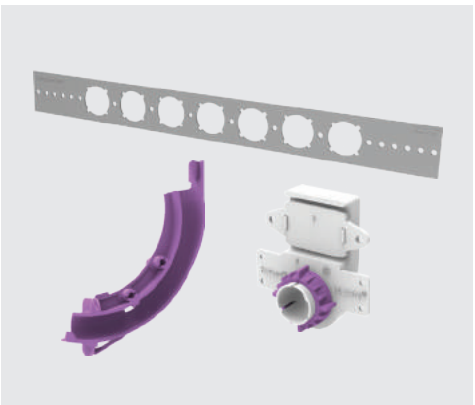
- Available in 1/2"-2"
- Available in push-to-connect, crimp, CPVC, compression, sweat and iron pipe connections

Fixture and Water Heater Accessories



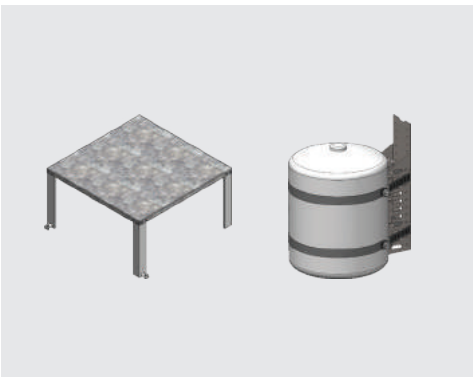
HoldRite Fixture and Appliance Boxes

- Available with tail pieces for PEX, copper and CPVC installations
- Sleek, high end aesthetics provide a professional finish
- Fire rated and non-fire rated options available
- Water hammer arrestor and non water hammer arrestor options



HoldRite Pipe Supports

- HoldRite pipe supports and pipe support brackets are code compliant and compatible with PEX, copper and CPVC.
- HoldRite PEX supports provide protection for PEX tubing in multiple applications. In stub-out applications you can mount and protect in-wall PEX using telescoping stout brackets
- You can also ensure PEX is safe from damage before and after pouring concrete, with pop-up in-slab pipe supports



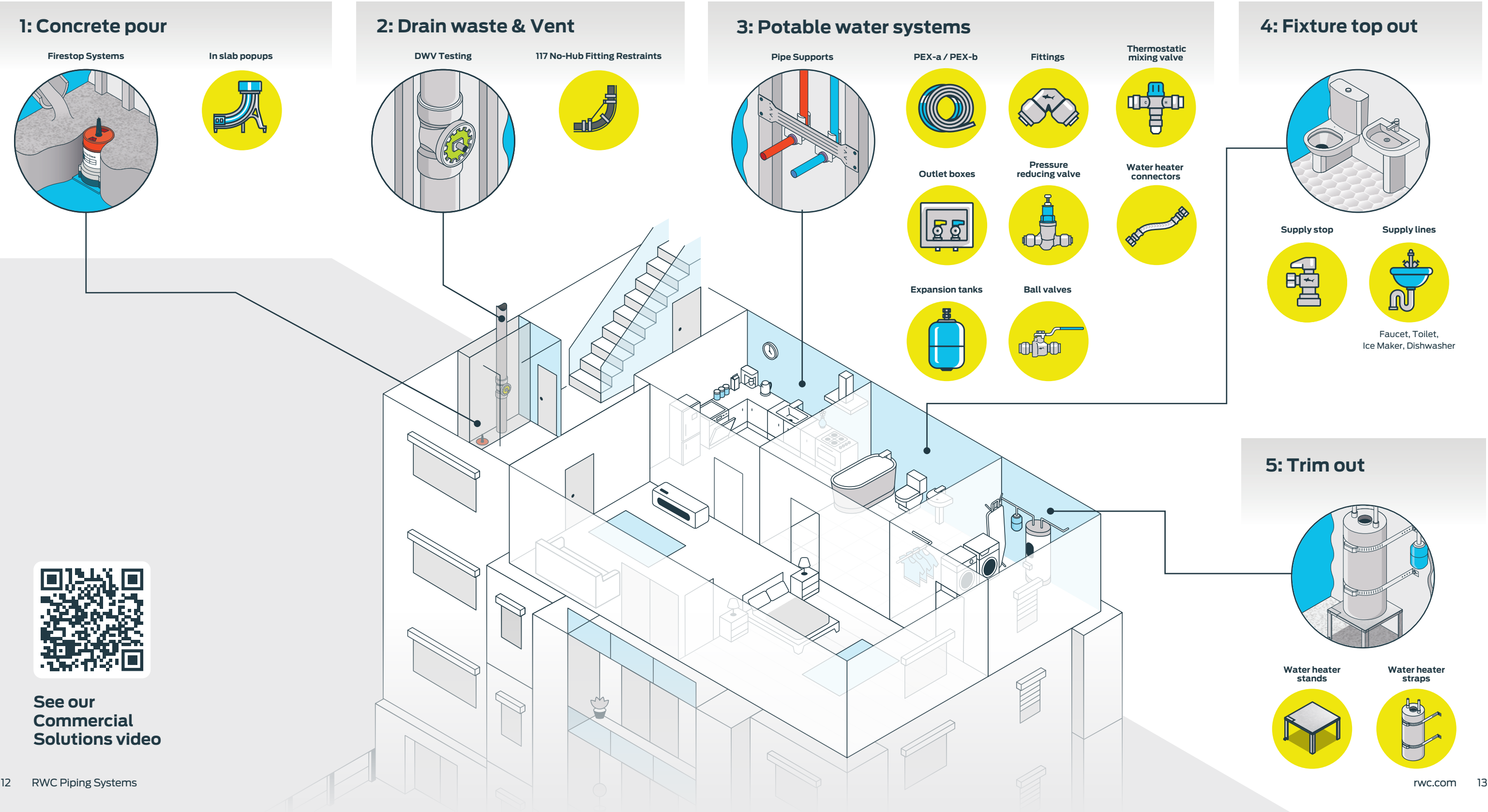
HoldRite Water Heater Accessories

- From platforms and stands to restraints and sheds, our solutions for water heaters and other equipment take the hassle out of installation
- For residential and commercial applications, HoldRite products are third-party tested and approved. They allow you to connect, elevate and secure units, using less floor space and with protection against damage from earthquakes

RWC products for every construction phase

Get the reliable products you need and give clients the results they expect with a suite of commercial plumbing solutions that provides consistent quality across the job site.

Whether you're firestopping, need sturdy pipe supports or want a quicker way to install a new fixture, RWC plumbing solutions are designed to make every stage of the project efficient, code-compliant and professional.





RWC Services



Jobsite

Whether you need more information on a new HoldRite solution before an estimation or your design team wants to see a product sample after you give them your submittal, our reps can help with on-site demonstrations and product training to answer all your questions.



Estimation Services

Our team of qualified cost estimators has the experience, knowledge of the trades and proficiency with the latest software to complete an effective estimate of materials. By providing accurate and quick estimates, we work to ensure you succeed by submitting competitive bids.



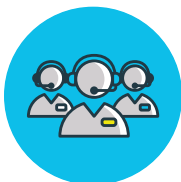
BIM/CAD Library

Get the insight and tools you need to more effectively plan, design, construct, and manage building and infrastructure. You can find a range of RWC products with BIM capabilities so you can easily incorporate product models and metadata into your plans.



Specification Submittals

If you want to use alternate materials or products to the ones on the project specs, you can use our Submittal Generator to compile a firestop submittal quickly and easily. It simplifies the process by aggregating all the necessary product approvals, UL listings and details so the design team has all the information they need to approve your submittal packages.



Technical Support

Have questions or comments? Need samples, additional product data or a price quote? Our Support Team understands your applications and can guide you on the right products for your job. Get in touch at 1-877-700-4242.



SCAN for
Warranty



SCAN for
Installation
Guide



rwc.com



Connect with us



Certifications

The most up-to-date certifications can be found at sharkbite.com.

The most up-to-date warranty can be found at sharkbite.com.

Tel: 1-877-700-4242 | Fax: 1-877-700-4280

Manufactured & Distributed by Reliance Worldwide Corporation®.

RWC_PEX_Piping_Systems_7.2023